

**KANE**  
**COUNTY**

A stylized map of Kane County, Arizona, rendered in a gradient of yellow and orange. The map is positioned to the right of the word 'KANE' and partially overlaps the top of the word 'COUNTY'.

**CELESTE MEYERES**  
*Commissioner*



## Raising Kane's 15th year!

- Location from Middle School → Stampin Up
- A County Coordinated and Sponsored Event
- Couldn't do it without you all
  - Kanab City
  - Center for Education, Business and the Arts
  - Kanab Area Chamber of Commerce
  - Volunteers and Local Partners

# **Businesses Contribute 75% of Community Funding, Including Help w These County Services:**

- Senior Services
- Search and Rescue
- Support for EMS
- Wildland Fire Personnel
- Events
- Behavioral and Public Health
- Court Services
- Volunteer Coordination



**Here is some of what is going as planned:**

- **North Event Center**
- **Multipurpose Recreation Center**
- **East Zion Visitors Center**
- **Coral Pink Sand Dunes  
Road**



# North Event Center



# Multipurpose Recreation Center

## Project is well under way!

- Once in a generation project
- Increases opportunities for tournaments & other revenue generating events
- For ALL ages (next to senior services campus): Pickleball, volleyball, basketball, walking track, and more!

## Funding Considerations

- No general taxpayer dollars used
- No additional County debt
- Self perform construction when possible
- Purpose-allocated funds with restricted use
- Partner w Kanab City, Rec & Transportation District



# Multipurpose Recreation Center



# East Zion Visitor Center



# East Zion Visitor Center



# East Zion Visitor Center





# Coral Pink Sand Dunes road improvements are on schedule for this year!

So it doesn't have to look like this again in the future



## Keys to Local Success:

- The Ability to Pivot & Adapt to Emerging Challenges and Opportunities
- Microbusinesses are companies with fewer than 10 employees... most nimble!
- Kane County has only 8000 residents and 1,200 licensed businesses!
- When our gov't and biz communities work together: We Got This!
- <https://www.facebook.com/share/p/17rv3JQWUX/?mibextid=wwXIfr>



## **Challenge: I drove to Kane County in an RV and I want to visit Zion... Now what?!**

- Zion total closure to large vehicles on schedule for June 2026
- Problem: Near term funding gap to operate transportation to get visitors from the east side of the park to existing shuttle lines
- While a long term plan is in place, in the meantime solutions are needed for about the next two years
- Please stand by for more information later in this presentation



Changing Direction:

Big Water Project-  
From ATV Course to...



### Advantage Big Water

- 1) A strong eight month visitor season
- 2) Numerous world-class destinations within an hours drive
- 3) 4.5 million visitors passing through each year
- 4) Glen Canyon Dam: 2 million annual visitors (10 minute drive from Big Water)
- 5) World-class accommodations already next door

### Visitor counts

Village viability: 500 to 800 visitors a day (minimum)

- 6% to stop

Glen Canyon National Recreation Area: 5.2 million  
Glen Canyon Dam: 2 million  
Horseshoe Bend Overlook: 2 million  
Average time at each: 1-25 hours

- 40% of visitors

Highway 89 travelers: 4.5 million





## Port-a-Potty Pivot!

Unsustainable \$18k/mo necessitated change to vaulted toilets instead:  
1rst one planned for Kanab Sand Caves

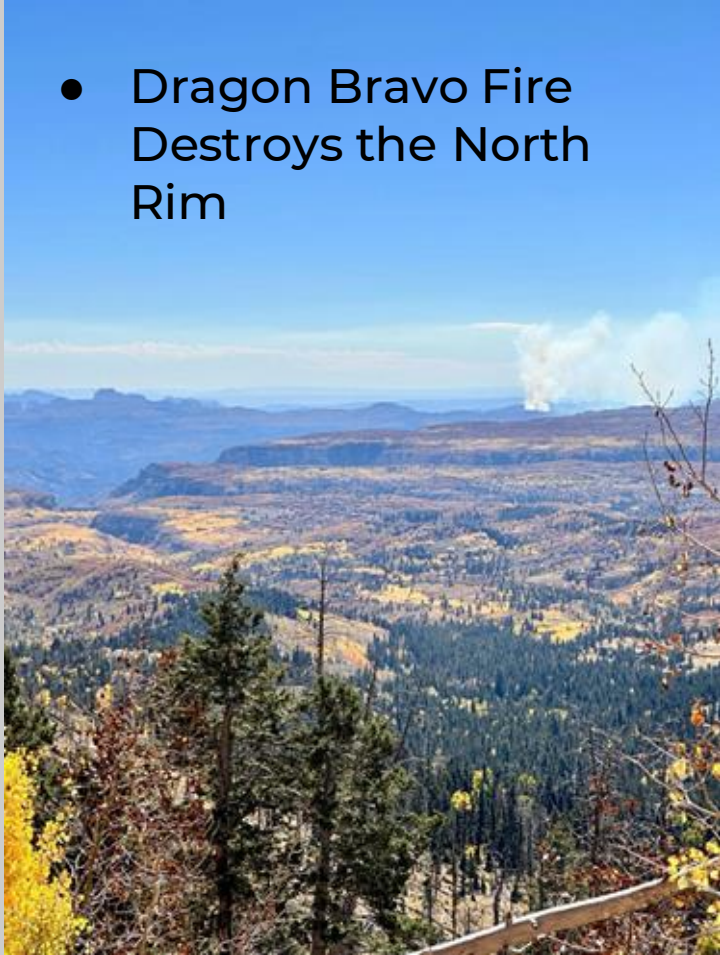


# You're Charging How Much?!

- Changes to non-resident National park fees
  - US Residents: \$80 America the Beautiful Annual Pass
  - Non-Residents: \$250 America the Beautiful Annual Pass
  - Each pass can be used for up to 3 additional passengers
  - Without pass, each non-resident would be charged \$100 extra per major National park, including Bryce, Zion, and Grand Canyon
  - Can be purchased online at [recreation.gov](https://www.recreation.gov)
- Unexpected news required close coordination with local and state tourism and other entities

# We didn't see that coming!

- Dragon Bravo Fire Destroys the North Rim



## Rebuild Efforts at the North Rim

- Brighty Being Restored!
- Cost Estimates for Rebuild
- New Infrastructure will be for year-round full access and use
- Local, State, and Federal Partners all working together for common goal of rebuild ASAP

Peter Jepson of Kanab Utah is the original sculptor of the one and only Brighty statue (no copies were ever made, though Jepson made approximately 100 small-scale bronze figurines of Brighty). Here he is at the North Rim with our beloved Brighty.



## What else is new?

What you have been up to: New businesses and new offerings throughout Kane County!





# Emerging Opportunities

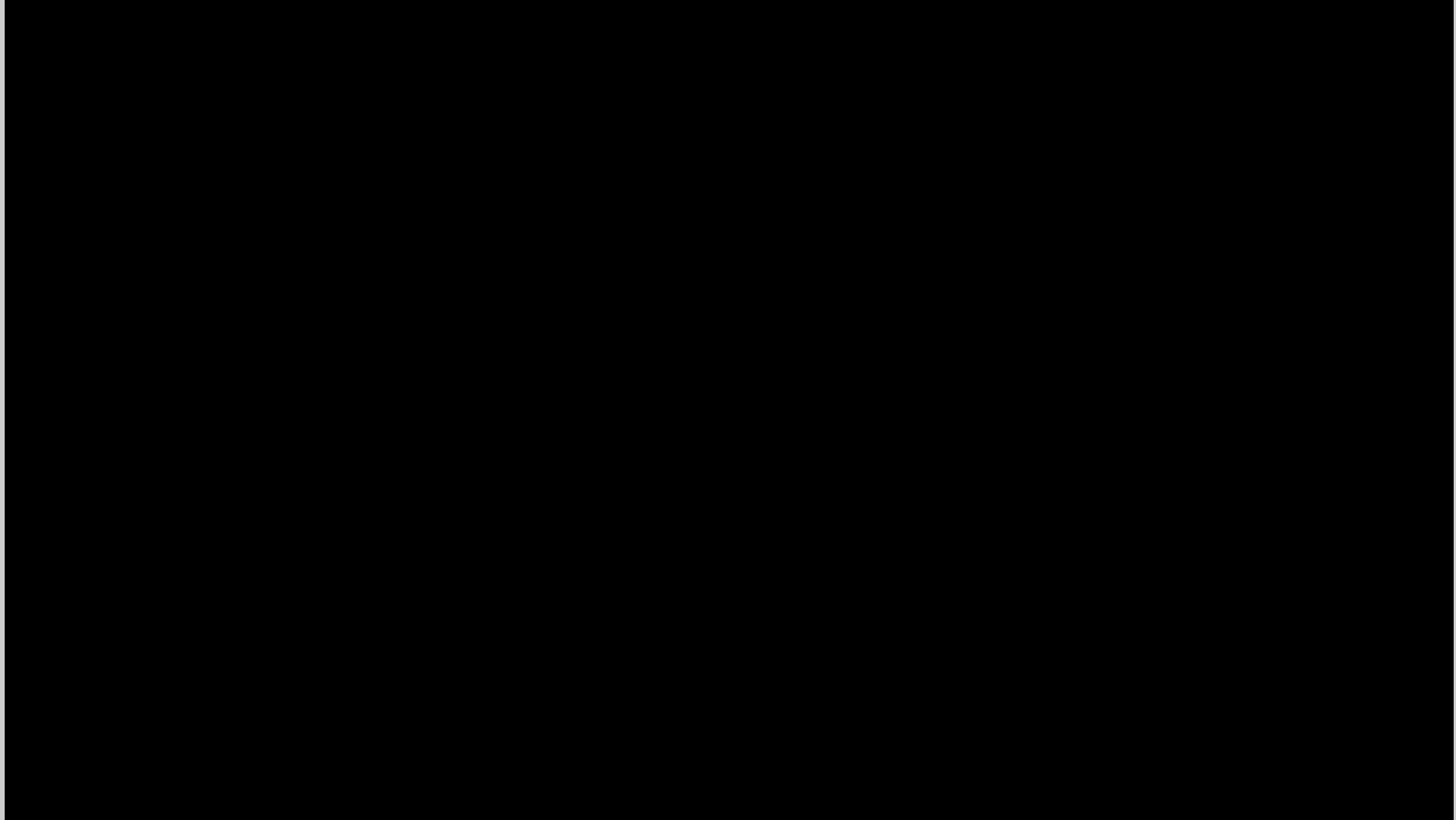
Agriculture - Utah has a trade deficit on food! We only grow 6-7% of the produce, and about ½ of the meat consumed here. Opportunities to explore diversification and supplemental production and processing of foods, such as apricot or rabbit farming

Partnership in Transportation Connector on East Side of Zion

Investment in Big Water Paleo Center







**Thank you!**  
**Let's welcome Kyler Ludwig,**  
**Kanab City Manager**

